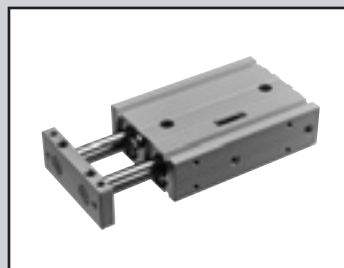


双活塞杆气缸 双作用·标准型

STR2-^M/_B-P4/P40-HP1 Series

● 缸径：φ6·φ10·φ16·φ20·φ25·φ32

JIS 符号



规格

项目		STR2-M-P4/P40-HP1 (滑动轴承)			STR2-B-P4/P40-HP1 (滚动轴承)		
缸径	mm	φ6	φ10	φ16	φ20	φ25	φ32
动作方式		双作用型					
使用流体		压缩空气					
最高使用压力	MPa	0.7					
最低使用压力	MPa	0.2	0.15		0.1		
耐压力	MPa	1.05					
环境温度	°C	-10~60 (但是, 不得冻结)					
配管口径		M5					Rc1/8
行程允许误差	mm	+2.0					
		0					
行程调整范围	mm	0~-5					
使用活塞速度	mm/s	50 ~ 500					
防回转精度	STR2-M	±0.4°		±0.3°			±0.2°
	STR2-B	±0.2°		±0.1°			±0.3°
活塞杆	STR2-M	滑动轴承					
轴承形式	STR2-B	滚动轴承					
缓冲		橡胶缓冲					
给油		不可					
允许吸收能量	伸出	0.008	0.061	0.181	0.303	0.68	1.3
	J 缩回	0.059	0.083	0.083	0.127	0.237	0.311

行程

缸径	行程 (mm)	最大行程 (mm)	最小行程 (mm)	带开关最小行程 (mm)
φ6	10、20、30、40、50	50	5	10
φ10				
φ16	10、20、30、40、50	100		
φ20				
φ25				
φ32				

注1：后端配管型时

- φ16 : 70
- φ20·φ25 : 60
- φ32 : 50

注2：关于中间行程

可按1mm为单位进行制作。
但是, 全长尺寸与其上一档标准行程的尺寸相同。

关于外形尺寸图, 请参阅《空压气缸综合II》(样本编号: CB-030SC)的STR2-^M/_B系列。

长寿命气缸

耐环境气缸

线性导线卡爪

薄型长行程卡爪

增压器

用于二次电池制造工序

用于食品制造工序

- SCPD3
- CMK2
- SCM
- SSD2
- MDC2
- MSD
- MSDG-L
- SMG
- LCR
- LCG
- STM
- STG
- STR2
- LSH-A
- LSH-G
- LSH-F
- LSHL-A
- LSHL-G
- LSHL-F
- LSHM-A
- LSHM-G
- LSHM-F
- LST
- LSTM
- ABP2
- SCPD3
- CMK2
- SCM
- SSD2
- MSD
- MSDG-L
- SMG
- STG
- STM
- LCR
- LCG
- STR2
- LSH-A
- LSH-G
- LSH-F
- LSHL-A
- LSHL-G
- LSHL-F
- SCPD3
- CMK2
- SCM
- SCG
- SSD2
- STG

型号表示方法

不带开关 (内置开关用磁环)

STR2 - M - 16 - 30 - R - P4 - HP1

带开关 (内置开关用磁环)

STR2 - M - 16 - 30 - SW51 - R - R - P4 - HP1

机种型号

A 轴承方式

B 缸径

C 行程

注2

■ 中间行程可按每1mm为单位进行制作。

D 开关型号

注3

E 开关数

F 选择项

注4

符号	内容		
A 轴承方式			
M	滑动轴承	注1	
B	滚动轴承		
B 缸径 (mm)			
6	φ6		
10	φ10		
16	φ16		
20	φ20		
25	φ25		
32	φ32		
C 行程 (mm)			
缸径	行程	可制作行程	半开行程
φ6	5 ~ 50	100	每1mm
φ10	5 ~ 50		
φ16	5 ~ 100	150	
φ20	5 ~ 100		
φ25	5 ~ 100		
φ32	5 ~ 100		
D 开关型号			
开关型号 请参阅第198~201页的对应表。			
E 开关数			
R	前端带1个		
H	后端带1个		
D	带2个		
F 选择项			
O	配管口位置180°更改		
R	后端配管型		

型号选择时的注意事项

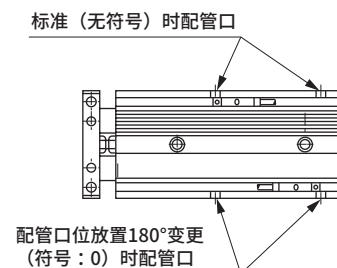
注1：轴承方式M的HP1对应P4规格。

注2：后端配管型“R”的最大行程为

- φ6·10 : 50行程
- φ16 : 70行程
- φ20·25 : 60行程
- φ32 : 为50行程。

注3：STR2-B-6·10在无法使用有触点开关。

注4：“O”时的配管口位置如下图所示。



关联产品

		调速阀					
型号	外观	配管口径 (Rc或R)			适用气管外径		
		M3	M5	1/8	4(φ4)	6(φ6)	8(φ8)
SC3W-M5-※P4			●		●	●	
SC3W-6-※P4				●	●	●	●

※中请填入适用气管外径的符号。
详情请参阅《二次电池对应元件 P4※系列》(样本编号: CC-1226C)。

SCP3
CMK2
SCM
SSD2
MDC2
MSD
MSDG-L
SMG
LCR
LCG
STM
STG
STR2
SCP3
CMK2
SCM
SCG
SSD2
SMG
LCR
STG
STS
STL
LSH-A
LSH-G
LSH-F
LSHL-A
LSHL-G
LSHL-F
LSHM-A
LSHM-G
LSHM-F
LST
LSTM
ABP2
SCP3
CMK2
SCM
SSD2
MSD
MSDG-L
SMG
STG
STM
LCR
LCG
STR2
LSH-A
LSH-G
LSH-F
LSHL-A
LSHL-G
LSHL-F
SCP3
CMK2
SCM
SCG
SSD2
STG

长寿命气缸
耐环境气缸
线性导线卡爪
薄型长行程卡爪
增空气器
用于二次电池制造工序
用于食品制造工序

开关对应表 (直线导线伸出型)

注1：气缸搭载型号为下表中的订购型号。
 注2：开关单体型号是在下表开关基本型号末尾加 -P4。
 注3：带※产品为带树脂接插件规格。

长寿命气缸

对应機種	形状	T形																																
订购型号	SW69	SW28	SWAK	SW17	SW29	SW27	SW11	SW18	SW12	SW13	SW49	SW21	SW22	SW23	SW40	SW39	SW47	SWAG	SWAJ	SWBK	SWBL	SW19	SWBW	SWCC	SWAN	SWCU	SWCV	SWCZ	SWAQ	SWBE	SW31	SW38	SW32	SW33
基本型号	TOH	TOH3	TOH5	T5H	T5H3	T5H5	T2H	※T2H	T2H3	T2H5	T2HR3	T3H	T3H3	T3H5	T2WH	※T2WH	T2WH3	T2WH5	T3WH	T3WH3	T3WH5	T8H	T8H3	T8H5	T1H	T1H3	T1H5	T3PH	T3PH3	T3PH5	T2YH	※T2YH	T2YH3	T2YH5

耐环境气缸

气缸型号																																				
SCPD3	●	●	●	●	●	●	●	●	●	●	●	●	●	●	●	●	●	●	●	●	●															
CMK2	●	●	●	●	●	●	●	●	●	●	●	●	●	●	●	●	●	●	●	●	●	●	●	●	●	●	●	●	●	●	●	●	●	●	●	●
SCM	●	●	●	●	●	●	●	●	●	●	●	●	●	●	●	●	●	●	●	●	●	●	●	●	●	●	●	●	●	●	●	●	●	●	●	●
SSD2 (φ12·φ16)	●	●	●	●	●	●	●	●	●	●	●	●	●	●	●	●	●	●	●	●	●	●						●	●	●						
SSD2 (φ20·φ25)	●	●	●	●	●	●	●	●	●	●	●	●	●	●	●	●	●	●	●	●	●	●				●	●	●	●	●	●	●	●	●	●	●
SSD2 (φ32)	●	●	●	●	●	●	●	●	●	●	●	●	●	●	●	●	●	●	●	●	●	●				●	●	●	●	●	●	●	●	●	●	●
SSD2 (φ40)	●	●	●	●	●	●	●	●	●	●	●	●	●	●	●	●	●	●	●	●	●	●	●	●	●	●	●	●	●	●	●	●	●	●	●	●

线性导轨卡爪

MSD																																					
MSDG-L																																					
SMG																																					
STG	●	●	●	●	●	●	●	●	●	●	●	●	●	●	●	●	●	●	●	●	●	●	●	●	●	●	●	●	●	●	●	●	●	●	●	●	
STM																																					

薄型长行程卡爪
增压器

LST																																					
LSTM	●	●	●	●	●	●	●	●	●	●	●	●	●	●	●	●	●	●	●	●	●	●						●	●	●							
ABP2	●	●	●	●	●	●	●	●	●	●	●	●	●	●	●	●	●	●	●	●	●	●						●	●	●							

用于二次电池制造工序

STR2																																					
LSH-HP1							●	●	●	●		●	●	●													●	●	●								

用于食品制造工序

SCP3																																					
CMK2																																					
SCM																																					
SCG																																					
SSD2																																					
STG																																					

开关对应表

直线导线伸出型

	T形						F形										K形																														
	SW41	SW42	SW43	SWDU	SWDV	SWDW	SWAL	SWEA	SW81	SW89	SW82	SW85	SW86	SWEE	SWEF	SWBV	SW79	SWBD	SWEN	SWCA	SW59	SWCD	SWCG	SWCH	SW58	SW51	SW52	SW53	SW61	SW62	SW63	SWFG	SWFM	SWFN	SW67	SW57	SWAR	SWFP	SWBA	SWFT	SWFU						
	T3YH	T3YH3	T3YH5	T2JH	T2JH3	T2JH5	FOH	FOH3	F2H	*F2H	F2H3	F3H	F3H3	F3PH	F3PH3	F2YH	F2YH3	F3YH	F3YH3	KOH	KOH3	KOH5	K5H	K5H3	K5H5	K2H	K2H3	K2H5	K3H	K3H3	K3H5	K3PH	K3PH3	K3PH5	K2YH	*K2YH	K2YH3	K2YH5	K3YH	K3YH3	K3YH5						
	●	●	●	●	●	●																																									
	●	●	●	●	●	●																																									
	●	●	●	●	●	●			●	●	●	●	●	●	●	●	●	●	●	●																											
	●	●	●	●	●	●																																									
							●	●	●	●	●	●	●	●	●	●	●	●	●	●																											
							●	●	●	●	●	●	●	●	●	●	●	●	●	●																											
	●	●	●	●	●	●														●	●	●	●	●	●	●	●	●	●	●	●	●	●	●	●	●	●	●	●	●	●	●	●	●	●	●	
									●	●	●	●	●	●	●	●	●	●	●																												
									●	●	●	●	●	●	●	●	●	●	●																												
																				●	●	●	●	●	●	●	●	●	●	●	●	●	●	●	●	●	●	●	●	●	●	●	●	●	●	●	●
									●	●	●	●	●	●	●																																

- SCP3
- CMK2
- SCM
- SSD2
- MDC2
- MSD
- MSDG-L
- SMG
- LCR
- LCG
- STM
- STG
- STR2
- SCP3
- CMK2
- SCM
- SCG
- SSD2
- SMG
- LCR
- STG
- STS
- STL
- LSH-A
- LSH-G
- LSH-F
- LSHL-A
- LSHL-G
- LSHL-F
- LSHM-A
- LSHM-G
- LSHM-F
- LST
- LSTM
- ABP2
- SCP3
- CMK2
- SCM
- SSD2
- MSD
- MSDG-L
- SMG
- STG
- STM
- LCR
- LCG
- STR2
- LSH-A
- LSH-G
- LSH-F
- LSHL-A
- LSHL-G
- LSHL-F
- SCP3
- CMK2
- SCM
- SCG
- SSD2
- STG

长寿命
耐环境
线性导轨
薄型长行程
空气增压器
用于二次电池制造工序
用于食品制造工序

开关对应表 (L形导线伸出型)

注1：气缸搭载型号为下表中的订购型号。
 注2：开关单体型号是在下表开关基本型号末尾加 -P4。
 注3：带※产品为带树脂接插件规格。

长寿命气缸

对应機種	形状	T形																																
订购型号		SW70	SWBG	SWBH	SW20	SWBJ	SW30	SW14	SW15	SW16	SW24	SW25	SW26	SW37	SW48	SWAH	SWBM	SWBN	SWBP	SWDK	SWDL	SWDM	SWCW	SWCY	SWCX	SWDE	SWAS	SWDF	SW34	SW35	SW36	SW44	SW45	SW46
基本型号		TOV	TOV3	TOV5	T5V	T5V3	T5V5	T2V	T2V3	T2V5	T3V	T3V3	T3V5	T2WV	T2WV3	T2WV5	T3WV	T3WV3	T3WV5	T8V	T8V3	T8V5	T1V	T1V3	T1V5	T3PV	T3PV3	T3PV5	T2YV	T2YV3	T2YV5	T3YV	T3YV3	T3YV5

耐环境气缸

气缸型号																																					
SCPD3	SCPD3	●	●	●	●	●	●	●	●	●	●	●	●	●	●	●	●	●	●																		
CMK2	CMK2	●	●	●	●	●	●	●	●	●	●	●	●	●	●	●	●	●	●	●	●	●	●	●	●	●	●	●	●	●	●	●	●	●	●	●	●
SCM	SCM	●	●	●	●	●	●	●	●	●	●	●	●	●	●	●	●	●	●	●	●	●	●	●	●	●	●	●	●	●	●	●	●	●	●	●	●
SSD2	SSD2 (φ12·φ16)	●	●	●	●	●	●	●	●	●	●	●	●	●	●	●	●	●	●							●	●	●									
SMG	SSD2 (φ20·φ25)	●	●	●	●	●	●	●	●	●	●	●	●	●	●	●	●	●	●				●	●	●	●	●	●	●	●	●	●	●	●	●	●	
LCR	SSD2 (φ32)	●	●	●	●	●	●	●	●	●	●	●	●	●	●	●	●	●	●				●	●	●	●	●	●	●	●	●	●	●	●	●	●	
STG	SSD2 (φ40)	●	●	●	●	●	●	●	●	●	●	●	●	●	●	●	●	●	●	●	●	●	●	●	●	●	●	●	●	●	●	●	●	●	●	●	

线性导轨卡爪

LSH-A	MSD																																				
LSH-G	MSD																																				
LSH-F	MSD																																				
LSHL-A	MSDG-L																																				
LSHL-G	SMG																																				
LSHL-F	SMG																																				
LSHM-A	STG	●	●	●	●	●	●	●	●	●	●	●	●	●	●	●	●	●	●	●	●	●	●	●	●	●	●	●	●	●	●	●	●	●	●	●	
LSHM-G	STM																																				
LSHM-F	STM																																				

薄型长行程卡爪
增压器

LST	LCR (φ12以下)																																				
LSTM	LCR (φ16以上)	●	●	●	●	●	●	●	●	●	●	●	●	●	●	●	●	●	●							●	●	●									
ABP2	LCG (φ16以上)	●	●	●	●	●	●	●	●	●	●	●	●	●	●	●	●	●	●							●	●	●									

用于二次电池制造工序

SCPD3	STR2																																				
CMK2	STR2																																				
SCM	LSH-HP1						●	●	●	●	●	●														●	●	●									

用于食品制造工序

SCPD3	SCPD3																																				
CMK2	CMK2																																				
SCM	SCM																																				
SCG	SCG																																				
SSD2	SSD2																																				
STG	STG																																				

